

Japan

ISCED 8

ISCED 7

ISCED 6

ISCED 5

ISCED 4

ISCED 3

ISCED 2

ISCED 1

ISCED 020

24

22

18

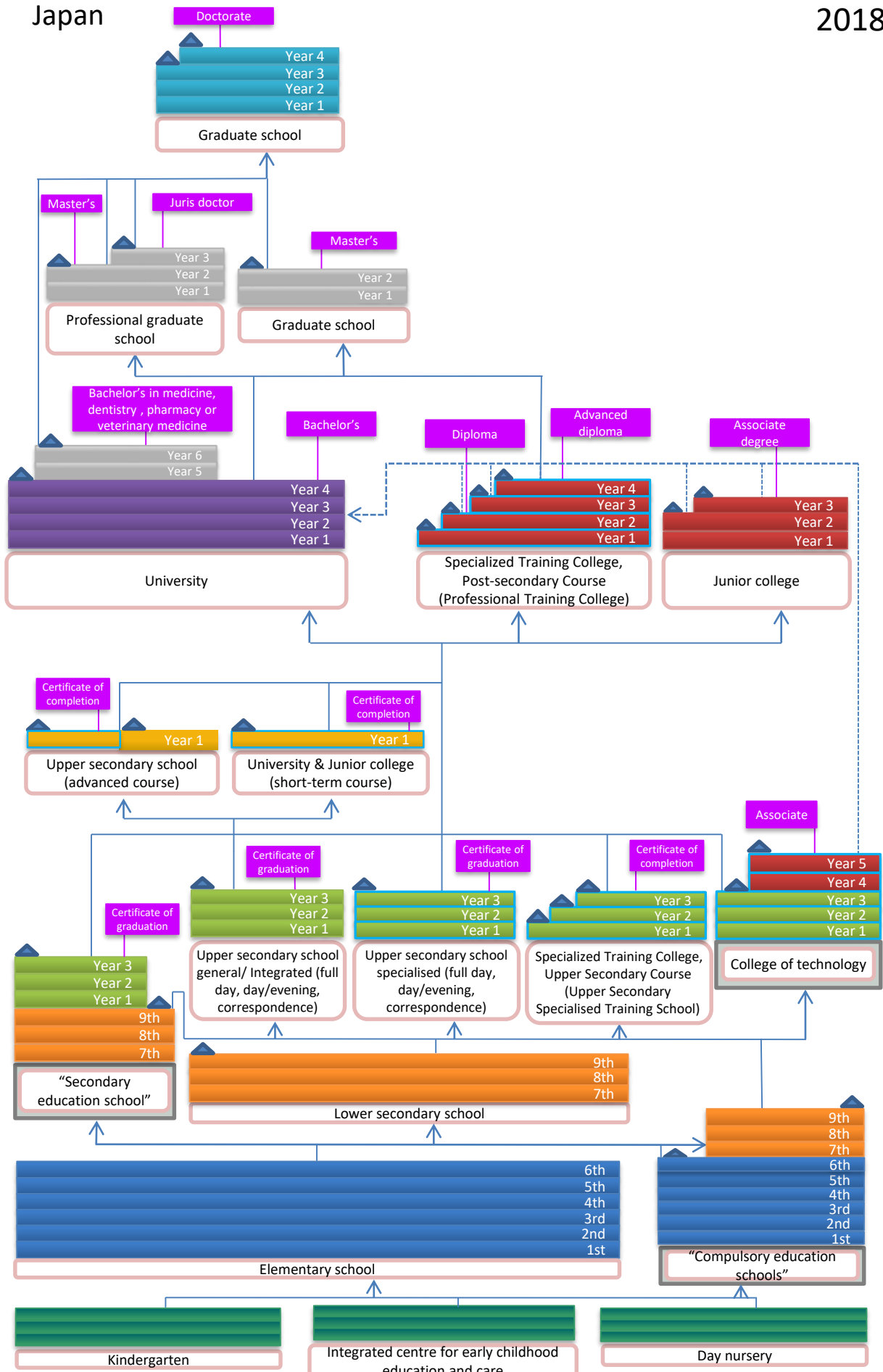
18

15


12

6

3




Key


 Starting/ending age of compulsory education


 Recognized exit point of the education system


 Typical student flow

 Transfer from a programme to another

 Programme designed for part-time attendance

 Vocational/Professional orientation
(according to national definition at the tertiary level)

 Single structure education (integrated ISCED levels)

 May be provided within one school structure

 Transfer at crossing lines is not possible

 Name of diploma, degree or certificate

2018 Reference year (school year 201/2018
in the northern hemisphere)

* **Theoretical starting ages** refer to the ages as established by law and regulation for the entry to a programme, actual starting ages may vary depending on the programme.